



# TEP Practice Profile

Genesis Centre  
Birchwood Science Park  
Warrington  
WA3 7BH

T: 01925 844004  
F: 01925 844002  
E: [tep@tep.uk.com](mailto:tep@tep.uk.com)  
W: [www.tep.uk.com](http://www.tep.uk.com)





# About TEP

TEP is an independent environmental consultancy. Founded by three partners in 1997, we have grown consistently and now have 60 professionals offering skills in landscape design, ecology, environmental planning, landscape management and arboriculture.

TEP is based in Warrington and is active across the UK. We undertake commissions for a wide range of clients including development agencies, government bodies, corporate estates, statutory undertakers, energy companies, private developers, planning authorities and charitable trusts.

TEP's core ethic is of endeavour, competence and innovation. Our clients value TEP's ability to give professional and pragmatic advice, coupled with a personal service.

The efforts of our staff and clients in contributing to environmental quality have been recognised in several awards, notably Landscape Institute and Institute of Ecology and Environmental Management national best practice awards.



4916



## TEP offers the following professional services:

- Landscape design
- Urban design and masterplanning
- Environmental planning
- Environmental impact assessment
- Ecology
- BREEAM (Ecology & Land Use)
- Landscape management
- Arboriculture
- Green infrastructure & greenspace strategy
- Spatial planning
- Landscape character assessment
- Landscape and visual impact assessment

## Please contact TEP's partners:

Ian Grimshaw	<a href="mailto:iangrimshaw@tep.uk.com">iangrimshaw@tep.uk.com</a>
Francis Hesketh	<a href="mailto:francishesketh@tep.uk.com">francishesketh@tep.uk.com</a>
Cath Neve	<a href="mailto:cathneve@tep.uk.com">cathneve@tep.uk.com</a>

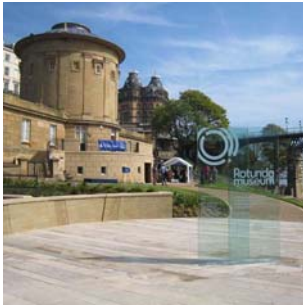
## For general enquires:

[tep@tep.uk.com](mailto:tep@tep.uk.com)

Tel: 01925 844004

[www.tep.uk.com](http://www.tep.uk.com)

## LANDSCAPE DESIGN



### **Rotunda Museum, Scarborough (Scarborough Borough Council)**

TEP, in association with Buttress Fuller Alsop Williams, was commissioned to design and implement the landscape surrounding the Grade II\* Listed, Rotunda Museum. The landscape theme revolves around geological interpretation using natural materials to mimic strata and faults and varied aggregate sizes within the footpaths. The commission involved the full delivery of the project through the development phase, submission of an HLF Stage Two bid and detailed design and implementation. The scheme has been nationally recognised with a BALI Award for hard landscaping.



### **Winstanley College, Wigan (Winstanley College Board)**

TEP provided landscape architectural services for the redevelopment of the 6<sup>th</sup> Form College. The innovative scheme, which responds to the strong building form whilst respecting the surrounding landscape (including Green Belt), will include a main entrance boulevard, multi-purpose amphitheatre, all-weather sports pitch, SUDS and attenuation pond. Conor Edwards (Director of Finance) at Winstanley College said TEP has *'not just taken on the brief but improved upon the outline scheme with some creative proposals, combined with a sensitive approach to existing landscape features and trees'*.



### **Stockwood Park Discovery Centre (Luton Borough Council)**

TEP was appointed alongside Buttress Fuller Alsop Williams, to design and implement a new HLF funded visitor centre at Stockwood Park. TEP provided landscape design services to produce a scheme which links the existing and new buildings around a central orientation space. TEP also provided an arboricultural implication assessment complying with BS 5837 in relation to the mature trees within the development area. As a result buildings have been carefully positioned to avoid any possible damage to those trees and ensure the character of the landscape is retained.



### **Olivers Mount and 'The Mere', Scarborough – Landscape Masterplan (Scarborough Borough Council)**

The masterplan is for commercial leisure and community uses on a 640 acre site currently used for football, motorcycle racing, angling and agriculture, with a golf course and housing nearby. The site is steeply-sloping with prominent views over Scarborough. Working with an economic consultancy (BE Group), TEP identified viable leisure-oriented uses that would fit in a woodland framework and contribute to landscape quality. TEP prepared graphic material for community consultation showing 3 masterplan options. The consultation informed the final masterplan which was welcomed by the Council.



### **Fulwood Park, Preston (Homes and Communities Agency with Morris Homes)**

TEP designed and implemented a series of open spaces surrounding a new residential development in Preston. The scheme includes a Jurassic-themed play area, a central open space focused around existing water bodies and a sensory garden irrigated by roof water drainage from surrounding houses. A local artist was commissioned to produce a pair of sculptures 'Brothers in Arms', which make reference to the English Civil War. This theme is carried through the landscape elements including walls, bridges and feature entrance posts. Bold planting provides year round interest.



## LANDSCAPE DESIGN



### **Egremont Promenade, Wirral (Mersey Waterfront Regional Park and Wirral Metropolitan Borough Council)**

TEP designed and implemented a £1 million landscape improvement scheme along a 3km stretch of promenade between Seacombe Ferry and New Brighton. As part of the design process, the public was consulted on the proposals to ensure local needs and aspirations were met. The scheme includes a high quality granite paved gateway entrance to the promenade at Seacombe Ferry Terminal. Access and boundary improvements were made to Seacombe Embankments and Vale Park and the historic Dr Poggi's shelter was restored to its former glory.



### **Grappenhall Heys Village Park, Warrington (English Partnerships)**

TEP was appointed to design and implement a new Village Park at the heart of a new residential development. The Village Park lies within an historic landscape and the scheme has been designed to enhance existing features whilst creating a useable amenity space with a unique character. The foundations of the former Hall have been uncovered and the footprint marked out with reclaimed stones. A ha-ha has been restored and new footpaths created to improve access into the surrounding woodlands. This network of paths has been enhanced using bespoke detailing at key entrances to the park.



### **Otterspool Park and Promenade, Liverpool (Mersey Waterfront Regional Park and Liverpool City Council)**

This £1.6million waterfront landscape scheme was designed and implemented by TEP as part of the "Pride in Our Proms" programme. TEP's designers worked with local people through a People's Panel. The works involved the replacement of 1750m of promenade railings, a striking new gateway at the main park entrance, a new contemporary play area and trim trail, restoration of a historic seating area, and the installation of Dhruva Mistry's 'Sitting Bull' sculpture. New site furniture was also installed. In total over 2km of promenade was improved.



### **Marus Bridge Gateway, Wigan (Wigan Council)**

The Marus Bridge Gateway is an important feature on the A49, a main route into Wigan. The Council wished to improve its appearance for the benefit of nearby residents and to create a positive and dynamic image of the town's economic and cultural vibrancy. TEP prepared 3 designs for public consultation. TEP involved local schools and the artwork produced by the children was incorporated into the final design. Following successful implementation, TEP was further commissioned to design, commission and implement the Landgate Gateway sculpture, also on the A49.



### **A580 Environmental Improvements, St. Helens (St Helens Council)**

TEP prepared a masterplan and implemented environmental proposals along 14km of the A580 and 6km of the A570. The £600,000 improvements included the renovation of existing spaces through new tree planting, fencing and improving field boundaries with new hedgerow planting. Over 600 specimen trees, 24,816 woodland trees and shrubs, 6km of hedgerow and 3ha of wildflower meadow were planted. Two derelict former highways depots along both roads were renovated through earthworks, wildflower and bulb planting and specimen tree planting was used to frame key views.

## URBAN DESIGN AND MASTERPLANNING



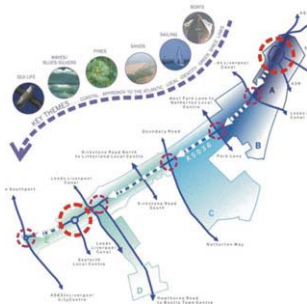
### **Victoria Square, Widnes (Halton Borough Council)**

TEP, in association with the Waterman Group, was appointed to remodel Victoria Square in the heart of Widnes Town Centre. The ornate, terracotta coloured, Victorian buildings that enclose the square strongly define its character and form key references in its regeneration. The design is modern, with a simple palette of materials, principally stainless steel and Yorkstone, that aims to complement the surrounding built form. A distinct sense of arrival and place is reinforced through sculptural gateway signage and bespoke details such as the themed mosaic and railing details.



### **Sandymoor Village Street and Local Centre, Runcorn (Homes and Communities Agency)**

TEP prepared a detailed development brief and masterplan for a new residential development and local centre at Sandymoor in Runcorn. A 'Village Street' concept was proposed, building on the character of a traditional Cheshire village with a range of house types and a streetscape with variation in scale and character. TEP co-ordinated a team of architects, engineers and landscape architects. The development brief was subsequently used by Halton Council as Supplementary Planning Guidance.



### **Atlantic Approach, Bootle (Sefton Council)**

TEP prepared a landscape and urban design masterplan for the A5036(T) Dunningbridge Road Corridor, a crucial link between the M57/58 motorway junction at Switch Island and the Port of Liverpool (Seaforth Docks). During Stage 1 we prepared design concepts for environmental improvements along and within the Corridor and undertook extensive consultations with residential and business communities and the Highways Agency. During Stage 2 we prepared detailed designs for a number of priority areas for the Council to implement.



### **Mouth of the Weaver, Frodsham, Cheshire (The Mersey Forest and partners)**

The masterplan for the 'Mouth of the Weaver' provides a coherent framework for existing and potential land uses on an extensive area of brownfield land highly visible from the M56. Via interviews, presentations and a workshop, TEP developed the masterplan to ensure that social, economic and environmental interests were balanced. The Masterplan received a Landscape Institute Award which noted it was *"a very thorough and well-articulated approach to a complex and problematic area shared by multiple agencies. .... very impressed by the way in which the ideas were refined and developed"*.



### **Bridgnorth Urban Design Strategy, Shropshire (Bridgnorth District Council)**

TEP, in conjunction with BE Group, developed an urban design strategy for the High Town area of Bridgnorth, a historic market town on the banks of the River Severn in Shropshire. The strategy will be used to guide future development and to target the enhancement and regeneration of the existing urban fabric. The strategy aims to strengthen the image and legibility of High Town. The scheme involved extensive consultation with key stakeholders, including the local authority, developers, landowners, local businesses and local residents.



## URBAN DESIGN AND MASTERPLANNING



### **Warrington Town Centre Public Realm Strategy (Warrington Borough Council)**

TEP's public realm strategy for Warrington Town Centre aims to create a high quality, legible and coherent public realm that binds the town centre together, creating a distinct identity. The vision builds on the existing historic assets and the recent streetscape improvements. The client's requirement was that the strategy should provide a framework for selection of materials, lighting, street furniture, public art, planting, and guide construction and maintenance. TEP also produced concept designs for the Town Centre - Bank Quay Station link and Bridge Street in conjunction with artist Stephen Broadbent



### **Colwyn Bay Town Centre, North Wales (Conway County Borough Council)**

TEP, in conjunction with Colin Buchanan & Partners, prepared designs for town centre streetscape enhancement. TEP's design palette outlined the specification for the public realm including paving, lighting, seating and planting. The selection was informed by consultation with various stakeholders and members of the public. Initial sketch designs were detailed and tender packages prepared for the Council to implement. Three schemes have been implemented, including the main gateways into Colwyn Bay and Sea View Road (pedestrianised street) in the town centre.



### **Leeds and Liverpool Canal, Liverpool (Mersey Waterfront Regional Park)**

TEP prepared an outline masterplan for the Leeds and Liverpool Canal Corridor from Pier Head in Liverpool to Crosby Marine Lake in Sefton. The masterplan was used by Liverpool City Council, Sefton Borough Council and British Waterways to develop various funding bids with a view to implementation during Liverpool's European Capital of Culture status in 2008. The masterplan identified public realm improvements and development opportunities along the canal frontage. It was Commended in the Strategy and Masterplanning category of the BURA Waterways Renaissance Awards 2007.



### **Bickershaw North, Wigan (Homes and Communities Agency)**

TEP prepared a masterplan for the 250ha former Bickershaw Colliery site near Wigan. As part of a large multi-disciplinary team TEP prepared a series of masterplan options for different leisure and recreational land uses including country park, visitor attraction, commercial activity zone and golf courses. Each masterplan option also included the production of detailed implementation and life cycle costings. Exhibition boards were prepared for public consultation, in partnership with NWDA and Wigan Council, and a preferred option has now been chosen and taken forward for implementation.



### **Avenue Coking Works, Chesterfield, Derbyshire (East Midlands Development Agency)**

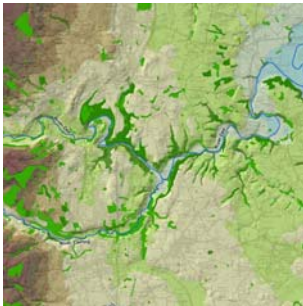
The derelict Coking Works is the most polluted site in England, occupying 90 hectares in the valley of the river Rother. The client's overall vision is to create a sustainable community resource. The masterplan is influenced by the need to remediate the site with a net materials balance, a need for >30ha development land, Greenbelt and floodzone constraints. TEP's masterplan includes the re-naturalisation of the river, sports pitches, a multi-user trail from Chesterfield to Tupton and washlands for flood and biodiversity enhancement. Phase 1 was implemented in 2006 with eventual completion planned for 2013.

## ENVIRONMENTAL PLANNING



### **Energy Transmission projects (National Grid and partners)**

TEP supports National Grid in the securing of consents in the UK and overseas. We carry out feasibility and routing studies for new connections and transmission reinforcements. This includes environmental appraisal; delivery of undertakings given while negotiating consents; co-ordination of statutory Environmental Statements; and negotiations related to consents, easements and land acquisition. We identify issues of concern, liaise with local planning authorities, government departments, negotiate with statutory, regulatory and advisory bodies and manage specialist consultants.



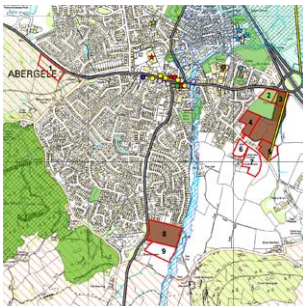
### **Legacy to Oswestry 132kV Overhead Line Reinforcement (Scottish Power Energy Networks)**

TEP undertook a routing assessment and consultation exercise for a proposed 132kV overhead line between the village of Legacy (near Wrexham) and Oswestry. Ecology surveys and landscape and visual assessments were used in conjunction with GIS mapping to determine the feasibility of various route options. Following selection of a preferred route, TEP carried out an Environmental Impact Assessment. The route affects the Johnstown Special Area of Conservation and TEP prepared a Habitats Regulations Assessment report in conjunction with Countryside Council for Wales.



### **Stamford Brook, Altrincham, Greater Manchester (Redrow Homes and Taylor Wimpey, with the National Trust)**

TEP produced a development framework and masterplan for a 28 hectare site on farmland owned by the National Trust. The work included ecological, landscape and visual assessment, an urban design strategy, detailed landscape designs, a landscape management plan, public consultations and the submission of nine planning applications. The client's brief was for exceptionally high standards of design and sustainability across the 700-unit scheme. TEP provides ongoing support in submission of detailed planning applications and reserved matters applications as the development is built.



### **Transit Gypsy and Traveller Sites Search and Appraisal Study (Conwy County Borough Council)**

TEP undertook a search and appraisal of potential transit sites to accommodate 10 pitches for Gypsies and Travellers. We consulted stakeholders including representatives of the Traveller communities to establish the criteria for site assessments. TEP subsequently developed a two-stage criteria approach for the assessment of candidate sites and undertook all assessments through desk and field-based research, and consultation with public bodies such as CCW, EAW and WAG. A final report was produced detailing recommended site search zones to inform the Local Development Plan.



### **Newlands Planning Guidance (Northwest Regional Development Agency / Forestry Commission)**

TEP produced a guidance toolkit for the Forestry Commission's reclamation programme in Northwest England (the Newlands programme) to explain planning requirements of forestry and community woodland regeneration on brownfield land. As well as producing the toolkit document, TEP trained the FC's officers on the planning system. This was adopted by the Forestry Commission as an example of national good practice. An article on the work was published in a 2008 edition of Planning magazine.



## ENVIRONMENTAL IMPACT ASSESSMENT



### **Lane End Brickworks, Buckley (Redrow Homes)**

TEP prepared an EIA and masterplan for a 300-house scheme at the derelict former brickworks. It contains a claypit with a large population of great crested newts, designated as a European Special Area for Conservation (SAC). The EIA considered ecological impacts of the entire reclamation and redevelopment scheme, together with heritage, groundwater, soils and landscape effects. The scheme was examined at public inquiry and was subject to Appropriate Assessment. Planning permission was granted, with 24 conditions which TEP is assisting Redrow to discharge.



### **BritNed Interconnector (BritNed Developments Limited)**

The BritNed project links the electricity grids of the Netherlands and UK allowing mutual trading of power. The project requires a converter station occupying 4 ha, with tall buildings and plant. TEP identified appropriate locations and advised on the optimal solution. The high voltage underground cables pass through a Special Protection Area, a partly wooded SSSI and a Scheduled Monument. TEP co-ordinated the environmental assessment, secured planning permission for the works and assisted in discharging conditions during construction. The scheme received consent and commenced



### **Gwynt y Môr Offshore Windfarm (npower renewables)**

TEP co-ordinated the process of securing consents for the onshore connection to the national grid system for the proposed Gwynt y Môr Offshore windfarm off the coast of North Wales. TEP first undertook feasibility studies for a new substation and approximately 11km of new cable routes. An Environmental Impact Assessment was needed for the connection works including an assessment of the effect of the works on ecology, contamination, noise, hydrology, cultural heritage, landscape and views and electromagnetic fields.



### **Development at Cooil Road, near Douglas, Isle of Man (Isle of Man Government)**

TEP assessed the impact of proposed business and commercial development on agricultural land near Douglas. The site is visible from a main road and from numerous open spaces and viewpoints. The proposed development included several units, one of which would be 18m tall. Having assessed the potential impact from 30 visual receptors, TEP advised on layout and design, suggesting how the development could be assimilated into the landscape. Landscape mitigation measures and boundary treatments were proposed. This informed into an EIA and an application for allocation of the site.



### **A58 Blackbrook Road Diversion (St Helens Council)**

TEP co-ordinated an Environmental Impact Assessment to accompany an application for planning permission for a 1.3km road link to the north of St Helens. TEP carried out detailed assessments in relation to the landscape and visual and ecological effects of the proposal and coordinated the production of the ES. The project was granted planning permission and TEP maintained a role in supervising water vole mitigation and knotweed removal works in advance of the road construction. The road is now built.



## ECOLOGY



### **Lincolnshire Dunes (Natural England)**

TEP completed NVC surveys and condition assessments of Gibraltar Point and Saltfleetby Dunes SAC. The work was undertaken on behalf of Natural England to inform future management of the SAC. Both sites have extensive maritime ecosystems including strandline, saltmarsh, foredunes, established dunes, marsh and scrub habitats. The dunes are of European importance and experience rapid change as a result of natural coastal processes. TEP used GPS and GIS to record and map hundreds of quadrats, collecting data on species composition and abundance, vegetation height and condition.



### **The Avenue Coking Works, Chesterfield, Derbyshire (East Midlands Development Agency)**

Since 1999 TEP has monitored protected species populations at an ongoing National Coalfields Programme site in Chesterfield. The data informs site management, remediation works and regeneration proposals. To date the project has included management and protection of habitats for great crested newts, bats and badgers; translocation of reptile and amphibian populations; and creation of a wetlands reserve for water voles. The reserve has been passed to the Derbyshire Wildlife Trust. In 2008 the Avenue project won the IEM Best Practice award and the Landscape Institute Science award.



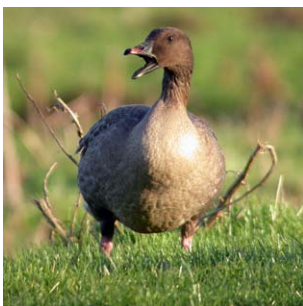
### **Lane End Brickworks, Buckley, North Wales (Redrow Homes)**

TEP prepared an EIA and masterplan for a 300-house scheme. This derelict claypit has a deep and unsafe lagoon with a large population of great crested newts, designated as a European Special Area for Conservation (SAC). TEP prepared an ecological plan for the 8-year remediation and development, and a long-term habitat management plan. Following intensive negotiations and Appropriate Assessment, the scheme was examined at Public Inquiry. Planning permission and a Welsh Assembly newt licence was granted. TEP assists Redrow with newt trapping, phasing, habitat creation and management.



### **Ecology Consultancy Framework to Homes and Communities Agency (HCA)**

TEP has provided consultancy to the HCA (and its predecessor English Partnerships) since 1998. We undertake habitat surveys and protected species assessments on land awaiting development, advising on ecological constraints. We negotiate with regulators to design and implement appropriate mitigation schemes. The HCA is redeveloping ex-NHS sites for affordable housing. TEP manages these sites, a task which requires wildlife surveys and protection measures prior to demolition. We advise HCA's estate managers on best practice for biodiversity, and have produced a wildlife training manual for contractors on HCA sites.



### **Thornton to Switch Island Road Improvement Scheme (Sefton Council)**

TEP carried out ecological baseline surveys to support an Environmental Statement for a major road improvement scheme in North Merseyside. Pink-footed geese were identified as being a key species requiring specific surveys. A ten-visit winter bird survey was undertaken over the extensive survey area once survey methods had been agreed with relevant consultees. Other ecological surveys undertaken included a breeding bird survey, a Phase 1 habitat survey with targeted NVC Phase 2 surveys and a protected species survey focussing on bats, water voles and red squirrels.

## ECOLOGY



### **Greater Manchester Otter Survey (Environment Agency)**

TEP carried out an otter survey of several Greater Manchester watercourses. Over 140 bridge crossings in both rural and urban locations were surveyed. The study forms part of a suite of actions undertaken by the Environment Agency as lead partner for the otter Biodiversity Action Plan. Results were presented in GIS. Findings included the first confirmed reports of otter on the River Irwell for over a century. The survey also recorded the presence of mink in order to help inform an action plan for dealing with this invasive species.



### **West Country - proposed leisure development (Client: Confidential)**

TEP assessed the extent of bat activity on a 200 acre site within foraging distance of a site of international importance for bats. The land, including over 40 abandoned buildings, was subject to surveys over the course of a year. Several bat species and their roosts were identified including the highly protected lesser and greater horseshoe bats. TEP devised a mitigation strategy for the redevelopment of the site, advising the client on phasing and costs of mitigation, including demolition, creation of bat barns and roost-boxes.



### **Wigan Local Development Framework Biodiversity Study (Wigan Council)**

Wigan Council commissioned TEP to undertake an assessment of current information and conduct surveys to identify and describe UK and Local priority habitats present within the Borough, as well as key linkages between habitats. Information was presented in relation to woodland, grassland, fen, wetland, and heath habitats. We also considered the biodiversity potential of managed green spaces. Changes and development pressures which are likely to threaten the Borough's ecology were identified, particularly in relation to the safeguarded land at the urban fringe.



### **Former Whittingham Hospital, Preston (Homes and Communities Agency)**

The hospital consists of two large building complexes which have been left vacant for over a decade. The grounds include a large fish pond, extensive mature plantations and grasslands. TEP carried out bat surveys over an 18-month period around the buildings and grounds. Numerous roosts were identified by dawn surveys across the site. The results from the surveys have informed the design proposals for the planning process and have determined mitigation and compensation requirements.



### **Gibfield Business Park, Wigan (Black Country Properties)**

This 200-acre former opencast site was left derelict but is being redeveloped as a business park with an extensive area of Green Belt dedicated as community woodland. Many pools and lagoons supported great crested newts. TEP has devised and is implementing a 10-year ecological plan for site reclamation. This commenced with creation of several new ponds prior to the infilling of a large lagoon and major earthworks to create the new landform which is now complete. Business units are being taken up, and TEP is retained to monitor the newt populations and assist with plot development.



## BREEAM – LAND USE & ECOLOGY



### Code for Sustainable Homes Assessments



TEP is very experienced in undertaking ecology surveys for Code for Sustainable Homes/EcoHomes assessments. We have completed over 100 surveys for over 30 different clients, including architects, registered social landlords and BREEAM assessors. The developments include a range of properties including houses, apartments and bungalows all of which require innovative thinking when advising on how to enhance the ecological value of the area. TEP encourages open dialogue between our BREEAM specialists and designers ensuring that recommendations on enhancing the ecological value are incorporated in to the earliest stage of the design process.



### Saughall All Saints Primary School, Saughall, Cheshire (Cheshire County Council and Willmott Dixon)

TEP has undertaken a BREEAM school assessment and landscape design at the above site. TEP completed 4 consultation sessions with staff and students involving in them in design of the landscape from an early stage. Our BREEAM specialist works closely with our design team to suggest ways of enhancing the ecology as well as complying with the criteria for the BREEAM School Assessment. We have also assisted with translocation of great crested newts and protection of mature oaks. Early indications are that this will be one of the first schools in the country to achieve a BREEAM rating of 'Excellent'.



### Oldham College, Oldham: BREEAM Education Assessment (Waterman Environmental)

TEP undertook an ecological assessment of Oldham College campus and developed recommendations as to how the ecology of the site can be enhanced as a consequence of development. Oldham College is committed to achieving a BREEAM rating of 'Excellent'. TEP liaised with the design team to realise the most appropriate opportunities to enhance the ecology of the site, whilst complying with the criteria for the BREEAM Further Education Assessment.



### Hawarden Business Park, North Wales (UK Land & Property)

UK Land & Property commissioned TEP to undertake a BREEAM Office assessment following TEP's ecological surveys and habitat creation work at the Business Park. The site is a former RAF airbase which had been abandoned and had undergone natural regeneration. TEP had identified presence of newts and had implemented a wetland mitigation scheme. Our BREEAM specialist was able to demonstrate to the client which aspects were vital to obtain ecology credits and how further credits could be gained through adaption of the plot landscaping proposals.



### The University of Warwick – Various sites including Chemistry/Physics Laboratory, Halls of Residence, Business School

The university is committed to achieving a BREEAM rating of 'Excellent' on all its new developments. TEP assists in helping them realise this aim. Our BREEAM ecology specialists advise on how to maximise Ecology credits thus increasing the biodiversity value of the site. Recommendations include innovative approaches such as the installation of green roofs and specification of a high percentage of native planting. TEP also assists the university with the translocation and conservation of newts, bats and other protected species, and with arboricultural surveys to support planning applications.

## LANDSCAPE MANAGEMENT



### **Runcorn Social Landlords Joint Procurement Initiative**

(CDS Housing Ltd, Liverpool Housing Trust, Riverside Housing and Maritime Housing Association)

The four Registered Social Landlords are responsible for the management of large areas of public open space and landscape in Runcorn. Each RSL secured, delivered and monitored the provision of landscape management services in different ways. TEP undertook a feasibility study to assess how the RSLs could work together to establish joint procurement of landscape management services and improve customer service and quality, cost efficiency and wider community benefits.



### **Cuerden Valley Park (Cuerden Valley Park Trust)**

Cuerden Valley Park Trust manages 260 hectares of historic parkland near Leyland. In 2006 the trust organised an event to showcase its work to the community, stakeholders and potential funders. TEP designed and produced a high quality interpretive brochure and a series of display boards. Following this event we have continued to work with the Trust to develop a business plan and strategy for the park. TEP also designed and produced a high quality summary of the strategy suitable for distribution to the public.



### **IneosChlor Headquarters, Runcorn (IneosChlor)**

ICI Runcorn commissioned TEP to review its landscape resource and procurement, delivery and monitoring of its management. Following the review we produced landscape management tender documents and drawings and were subsequently commissioned to manage the contract. IneosChlor acquired ICI's Runcorn operation and has continued to use TEP as its landscape consultant. TEP also undertakes arboriculture and woodland assessments and provides design support for planning applications which relate to the INEOSChlor landscape.



### **Management of Homes and Communities Agency's Corporate Green Estate**

TEP administers 14 landscape management contracts on behalf of HCA with an annual value of £520,000.00. These contracts cover an area of over 600 hectares including development land, former NHS Trust sites, landscaped public open space and landscape associated with existing commercial development, throughout HCA's Northern, North Western and Midland regions. In addition term contracts ensure that the hard landscapes on HCA's landholdings are maintained and repaired to a high standard whilst other contracts cover arboricultural and thinning works.



### **Managing the Marshes - Strategy, Masterplan and Management Plan. (Groundwork South East London)**

TEP prepared a vision, strategy and implementation plan for three grazing marshes in the Thames Gateway, providing a robust framework for Government green infrastructure funding. The strategy drew on the aspirations of local authorities, landowners and partner organisations, reflecting the importance of the marshes as part of the East London and Kent Thameside Green Grids. TEP identified core values and objectives, prepared masterplan options, completed a Sustainability Appraisal, and wrote a delivery plan for the initiative and landscape management plans for each marsh.



## ARBORICULTURE



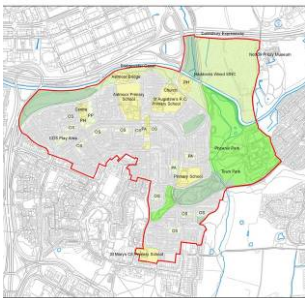
### **Arboricultural Asset Management (Homes and Communities Agency)**

TEP manages over 200,000 trees on behalf of HCA across an extensive land portfolio using programmed tree surveys to satisfy its legal duty of care to maintain tree stock in a safe and healthy condition. To efficiently deliver this service TEP has developed the Landscape Institute Award winning tree risk management system *Arborcura*, which comprises a bespoke database integrated with a GIS package. Accurate tree locations and detailed information about tree condition are recorded, from which a hazard rating is calculated that dictates the re-inspection frequency.



### **Gainsborough School, Crewe (Willmott Dixon)**

TEP supported a planning application for a school building extension. A tree survey to BS5837:2005 standard, an arboricultural implication assessment and a detailed method statement for construction were prepared. This assessed the suitability of each tree for retention within the proposed development and identified the special construction techniques needed to successfully retain several mature oak trees. The client was also advised on protective fencing, non-invasive hard-surface construction and suitable tree species for planting within the school grounds.



### **Castlefields Tree Strategy, Runcorn (Halton Council and partners)**

TEP drew up a strategic plan for the future management of the tree stock on the Castlefields estate in Runcorn as part of the ongoing regeneration of the area. TEP's geodatabase of tree locations, species, condition and risk proved an invaluable tool in mapping and analysing the spatially complex and varied tree stock. The resulting management plan was adopted by the project stakeholders and will be implemented over subsequent years.



### **NHS Sites in Merseyside (MerseyCare NHS Trust)**

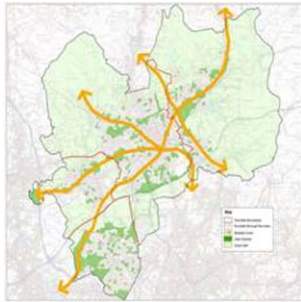
TEP was commissioned to undertake tree hazard inspections at six sites across Liverpool. Detailed tree inventory and survey reports were produced supported by clear and accurate CAD drawings. Where applicable the reports included tree work recommendations, taking into account current and future land use. Tree hazard inspection was necessary for the development of long-term arboricultural management strategies and was essential for the NHS Trust to comply with its duty of care.



### **Styal Road, Wythenshawe, Manchester (Persimmon Homes with UK Land and Property)**

This mixed commercial and residential development has many mature oak and ash trees close to developable areas. An arboricultural implications assessment and a method statement were produced. TEP then supported the developers through the construction phase with site supervision, LPA consultation and practical advice. Unique site conditions required a proactive and adaptable approach to implementing the method statement to satisfy both the clients' design requirements and the strict conditions imposed as part of the planning consent.

## GREENSPACE AND GREEN INFRASTRUCTURE



### **Quantitative and Qualitative Assessment of Urban Greenspace in Rochdale (Rochdale Metropolitan Borough Council)**

TEP carried out a qualitative and quantitative assessment of greenspaces in the borough, together with recommendations for future improvements to sites and green networks. A comprehensive desk review was undertaken, examining national, regional and local legislation and greenspace best practice. Desk based functional analysis using GIS was also undertaken. Site surveys of priority areas were carried out. Potential and existing green networks and corridors were identified along with recommendations for improvements to design and management of spaces.



### **Wrexham Green Network Strategy (Wrexham County Borough Council and Countryside Council for Wales)**

TEP produced a green network strategy for Wrexham town and the rural areas of the borough. Using the Countryside Council for Wales' Accessible Natural Greenspace toolkit as the basis for the work, a combination of GIS analysis and visual assessment was used to identify areas with a deficit in the provision of accessible natural open space. Recommendations were made as to how this could be addressed in terms of management or policy options, and a map-based green network was developed. The functionality of greenspace was also examined.



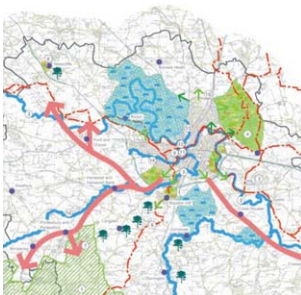
### **Green Infrastructure Strategy for Urban South Hampshire (Hampshire County Council)**

TEP was commissioned by the Partnership for Urban South Hampshire (PUSH) to examine the area's geography and demography, and the implications of predicted future changes from growth and climate change. A detailed analysis of the priorities for green infrastructure laid the foundations for setting out principles and a vision for Green Infrastructure in South Hampshire. This identified broad areas of opportunity and provided a series of spatial frameworks before setting out recommendations for future work.



### **Green Infrastructure Feasibility Study for Greater Manchester (Association of Greater Manchester Authorities and Natural England)**

TEP advised on the feasibility of a green infrastructure (GI) framework for the Greater Manchester City Region. The study considered what 'green infrastructure' would mean for the city region and set out a 'route map' for AGMA to develop a GI framework. It advised on how a framework document might be structured and how delivery of GI might be enhanced. The study culminated in the drafting of a spatial framework for green infrastructure and advice on how Local Authorities might incorporate green infrastructure policy into Local Development Frameworks and Sustainable Community Strategy.



### **Green Infrastructure Strategy for Shrewsbury & Atcham (Client: Shrewsbury & Atcham District Council)**

Shrewsbury is a Growth Point with outstanding urban and rural landscapes. Under pressure to provide additional homes, it is also threatened by climate change, particularly flooding from the River Severn. The Green Infrastructure Strategy provides information and guidance for conserving, enhancing and extending green infrastructure resources and assets. TEP's work includes a borough-wide strategic plan, a town centre spatial priorities plan and proposals for local areas and villages. The Strategy is in the emerging Local Development Framework and will be in the New Growth Point delivery plan.



## GREENSPACE AND GREEN INFRASTRUCTURE



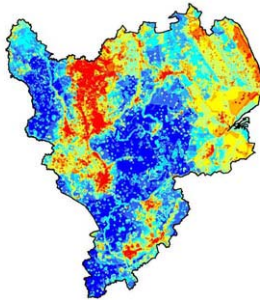
### **Pennine Edge Forest, Greater Manchester (Pennine Edge Forest)**

TEP co-ordinated a Business Action Plan for the Pennine Edge Forest in partnership with its constituent local authorities, Forestry Commission, United Utilities and Groundwork. Forest-wide objectives relating to regeneration, living, working and learning were articulated. 'Landscape Investment Areas' were identified for regenerative improvements. Over 100 specific projects were identified and prioritised for action over a 10-year period; with a detailed costed plan for the first 3 years. TEP continues to support the Forest officers with technical support on a call-off basis.



### **River Dee Park Plan & Sites Assessment (Chester City Council)**

The River Dee Park consists of over 20 green and civic spaces close to the river in the city of Chester. It includes flagship spaces such as Grosvenor Park, along with more naturalistic areas such as The Meadows and Calday Woods. TEP drew up a masterplan for the joint branding and co-ordination of activity across these parks so that they could be managed strategically to a common quality standard. Individual sites within the Park were assessed using the criteria set out in 'Raising the Standard', (the Green Flag Guidance), and recommendations made for enhancing management.



### **East Midlands Green Infrastructure Strategy (East Midlands Regional Assembly)**

TEP was appointed (with IBIS and Alison Millward Associates) to investigate the scope for Green Infrastructure in the East Midlands. The study identified key delivery barriers, and examined drivers for change and opportunities for policy and cultural shifts. Actions were recommended for organisations to collectively overcome impediments and improve contributions to Green Infrastructure. A detailed mapping exercise determined the form and function of Green Infrastructure, providing a tool to advance understanding of the spatial dimension of multi-functional landscapes.



### **Community Forest Feasibility Study and Action Plan (Leicestershire County Council and Natural England)**

TEP reported on the feasibility of a community forest in Central Leicestershire. This involved GIS mapping of current land uses and an analysis of the potential functions land could play in a future community forest. Landscape character and socio-economic patterns of health, income and employment were used to identify areas of greatest need and opportunity for community woodland. TEP then prepared an action plan. This required consultation with local groups delivering environmental improvements, preparation of an influencing strategy, and consideration of governance and management of the project.



### **Weaver Valley Regional Park: Programme Management and Project Delivery (Cheshire County Council)**

TEP was commissioned by Cheshire County Council to deliver and develop the Weaver Valley Regional Park. The work involved the delivery of a number of distinct projects which required coordination of input from a range of stakeholders, including British Waterways, Cheshire County Council Public Rights of Way and Vale Royal Borough Council Planning and Environment staff. Practical experience of project delivery including submission of funding bids has given TEP an excellent understanding of project feasibility and funder requirements.

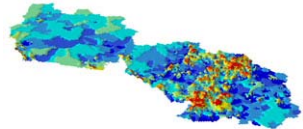
## SPATIAL PLANNING



### **Natural Environment Index (Natural England)**

TEP was commissioned to undertake a study of the spatial relationships between natural environment quality and multiple deprivation in the North West. Socio-economic deprivation was mapped and a natural environment index constructed and mapped using a broad range of natural environmental indicators. Spatial relationships between socio-economic deprivation and the quality of the natural environment were examined, leading to a discussion of situations where investment in environmental improvement might yield socio-economic uplift.

### **Public Benefit Recording System (PBRS) (various government agencies)**



TEP developed a toolkit that assists decision-makers in the prioritisation of environmental regeneration. PBRS is a technical, GIS based tool which brings together social, economic and environmental data. It highlights areas where environmental investment can yield the greatest socio-economic benefits. The tool has been applied in several large regeneration projects and was adopted as an example of best practice in several national and regional policies relating to green infrastructure and brownfield reclamation. PBRS can be found online at [www.pbrs.org.uk](http://www.pbrs.org.uk)



### **Black Country Environmental Infrastructure Guidance (Black Country Authorities (Dudley, Sandwell, Walsall and Wolverhampton Councils))**

TEP acted as a critical friend for the four authorities in their Environmental Infrastructure Guidance (EIG). Four EIG methodologies were assessed to ascertain their relevance, robustness and achievability. From these, a final EIG methodology was recommended. The EIG is in the Black Country's Joint Core Strategy submission, enabling spatial planning and providing justification for local environmental proposals, as well as contributing towards the West Midlands RSS's aim of transformation of the Black Country's environment.



### **Northwest Regional Economic Strategy and the NEWLANDS programme of Community Woodland reclamation of derelict land (NWDA/Forestry Commission)**

TEP developed a GIS model to consider potential NEWLANDS sites in relation to the North West Regional Economic Strategy (RES). Using the Public Benefit Recording System ([www.pbrs.org.uk](http://www.pbrs.org.uk)), the spatial aspects of the RES were analysed to identify areas where woodland reclamation of derelict land could most contribute to NWDA's economic priorities. Potential sites were shortlisted where NEWLANDS investment would have the greatest value and deliver the greatest public benefits.



### **GIS and Spatial Planning Technical Support Consultancy (Forestry Commission)**

TEP provides technical support and advice to the Forestry Commission in North West England and to the Newlands brownfield regeneration programme. Working regularly with partner agencies, we develop and apply innovative GIS techniques to produce maps and analyse data that contribute to the production of evidence bases for targeting investment, guiding programme delivery and informing policy development in the region.

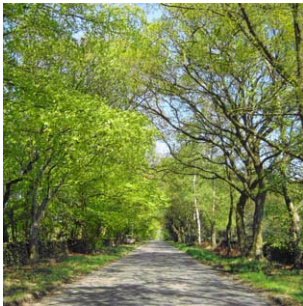


## LANDSCAPE CHARACTER ASSESSMENT



### **Mouth of the Weaver, Frodsham, Cheshire (The Mersey Forest and partners)**

The Masterplan for the 'Mouth of the Weaver' provides a coherent framework for existing and potential land uses on brownfield land highly visible from the M56. The plan is based on a landscape character assessment of this complex urban fringe environment. Seven character areas were recognised, ranging from undisturbed Mersey Marshlands to the INEOSChlor chemical works. Spatial portraits were prepared for each character area, defining their characteristics, vulnerabilities, heritage interests and community value. This informed the masterplan which received a Landscape Institute Award.



### **Charnwood Forest Landscape Character Assessment (Leicestershire County Council)**

Charnwood Forest has significant diversity of landform and land cover. It crosses several administrative boundaries and encompasses various landscape designations. TEP's first task was to analyse existing studies to classify landscape character areas. A subsequent field assessment identified the pressures on the landscape and its sensitivity to various types of change. TEP also assessed the setting of settlements within the landscape and provided recommendations and policy guidelines as to how to manage future development.



### **Blaby Landscape Character Assessment (Blaby District Council)**

TEP undertook a landscape character assessment to inform Blaby District Council's Local Development Framework. The study examined the characteristics of the 22 settlements in Blaby and classified the district into distinct character areas. Work included desk-based study, site surveying, public consultation and analysis to form judgements on the quality and condition of the landscape and townscapes. The findings have been subject to examination at appeals against refusal of planning permission for developments in Leicestershire's Green Wedges.



### **Wirral Landscape Character Assessment (Wirral Council)**

TEP characterised the landscape and settlement fringes of Wirral. The project included the production of guidance to aid development control decisions, landscape management and conservation strategies and guide landscape change. TEP has undertaken a series of interactive stakeholder consultation exercises to collate local views on landscape character, distinctiveness and inherent value and a web-based questionnaire. The study also assessed potential land allocations which may be taken forward for housing in the emerging LDF for their suitability in landscape terms for development.



### **Halton Landscape Character Assessment (Halton Council)**

TEP has undertaken an assessment of the landscape character of Halton Borough, comprising the towns of Runcorn and Widnes on the River Mersey. The study will appraise the existing landscape to identify what is special and distinctive and provide a commentary on landscape sensitivity and capacity to accommodate change. The study will make recommendations to inform the emerging LDF and to guide future policy and development at key locations throughout the borough. Public consultation includes an interactive workshop and a postal questionnaire.

## LANDSCAPE AND VISUAL IMPACT ASSESSMENT



### **Legacy to Oswestry 132kV Overhead Line Reinforcement (Scottish Power Energy Networks)**

This 40km route corridor crosses from England to Wales. Visual receptors include villages, farmsteads, public open spaces and rights of way. A desktop study collated information about landscape character and areas of heritage and ecological importance. GIS was invaluable in mapping zones of visual influence of route corridor options. TEP prepared graphic material for public consultation, following which the client selected a preferred corridor. Further landscape and visual assessment was carried out to identify the scope for mitigation of adverse impact through sensitive routing and off-site screening.



### **Leicester Tigers Rugby Stadium (Frank Whittle Partnership)**

TEP was commissioned to carry out a townscape and visual appraisal and also to undertake ecological surveys and an arboricultural implication assessment. The proposed scheme included the demolition of the existing stadium and the rebuilding of a new larger contemporary structure together with a new hotel and extension to Leicester College campus. TEP produced a detailed study which assessed the effects of the new development on views and the character of the surrounding townscape. The study formed part of a suite of information produced in support of the planning submission.



### **Thingwall Hall, Knowsley, Merseyside (Brothers of Charity)**

Thingwall Hall is a residential care and therapy centre in a Grade II Listed Building. Its grounds have lawns, mature trees and communal residential, leisure and workshop units. The client wanted to retain care facilities on a reduced footprint, with conversion of the Hall for residential and headquarter uses, with new housing in the grounds. TEP carried out landscape and visual assessment, coupled with ecological and tree surveys. The scheme went to public inquiry. TEP gave landscape evidence and permission was granted by the Inspector.



### **Manchester Airport Leisure and Commercial Development Area (Manchester Airports Developments Ltd)**

TEP carried out landscape and visual assessments for a major development complex consisting of 3 large hotels, a logistics unit and a transit shed located in Green Belt, between the Airport and the M56 motorway. Ecological surveys were carried out, requiring negotiations with planning authorities and implementation of great crested newt translocation. A particular challenge was the need to carry out and present the assessment work on a staged basis, as the design parameters for the entire development complex were not known at the outset.



### **Land in Green Wedge, Blaby, Leicestershire. (Blaby District Council)**

TEP undertook a landscape character assessment of Blaby District as part of its evidence base for its LDF preparation. Developers argued that the need for housing and poor progress of review of the development plan combined to make a case that was stronger than any alleged harm to landscape in parts of the Green Wedge. The Council's refusals of permission were taken to appeals. TEP's evidence was that significant harm would be done to views and the experience of the Green Wedge by local people using the footpaths and the area for recreation. The developers' appeals were dismissed.





Genesis Centre  
Birchwood Science Park  
Warrington  
WA3 7BH

Tel: 01925 844004  
Fax: 01925 844002  
Email: [tep@tep.uk.com](mailto:tep@tep.uk.com)  
[www.tep.uk.com](http://www.tep.uk.com)