

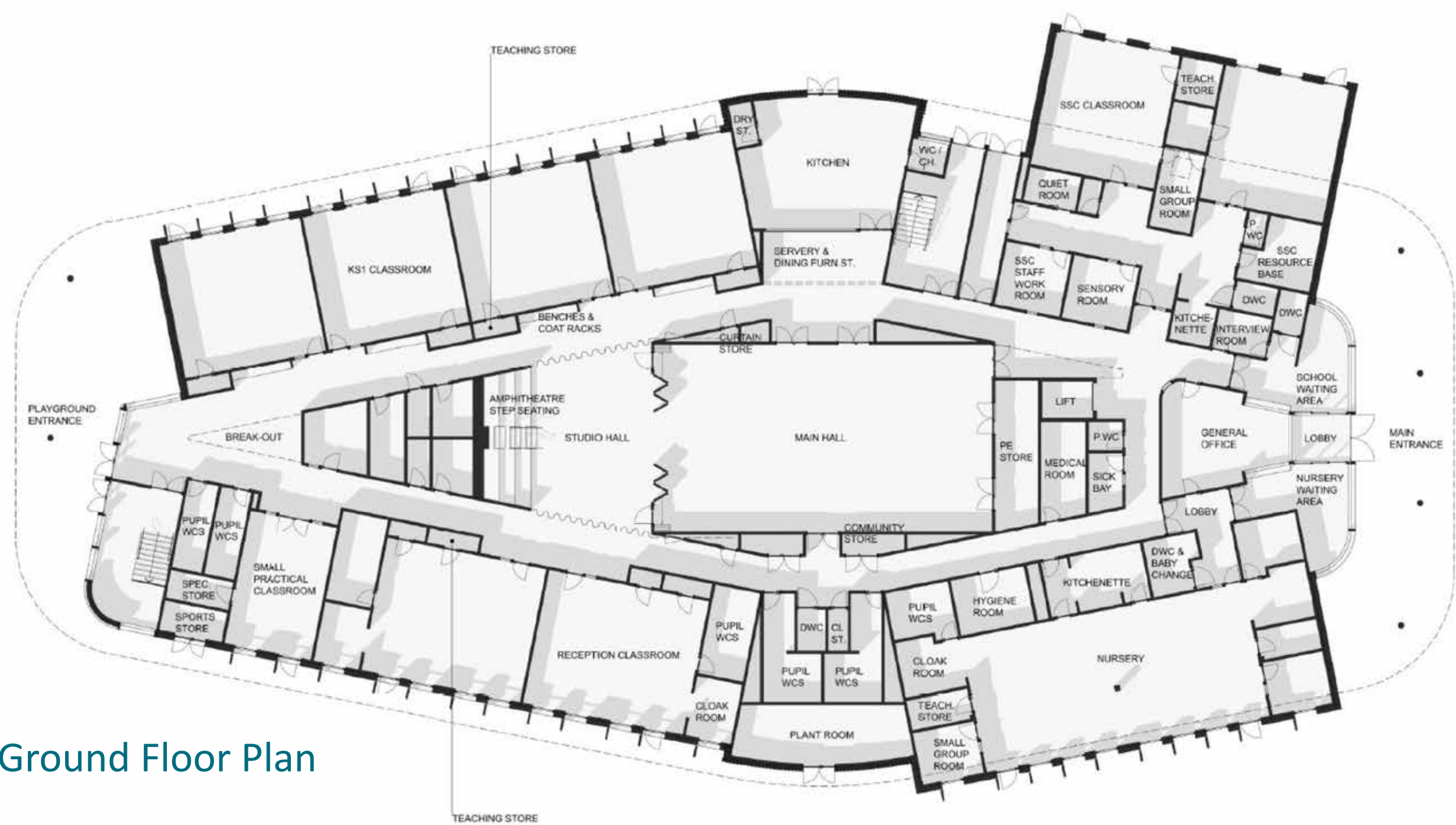
LAYOUT AND APPEARANCE

Key Principles

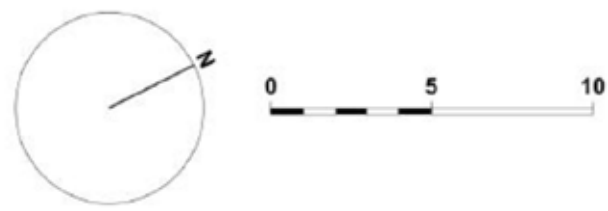
- Teaching classrooms to the perimeter of the building, on the ground floor, allows for pupil access to external areas.
- A central hall creates a dynamic heart to the school.
- Nursery and Special Support Centre are proposed as individual units within the school.
- Staff facilities located on the secure line to the north.
- Roof canopy embraces neighbourhood centre and provides safe congregation space.



Studio Hall with Amphitheatre Step Seating



Ground Floor Plan

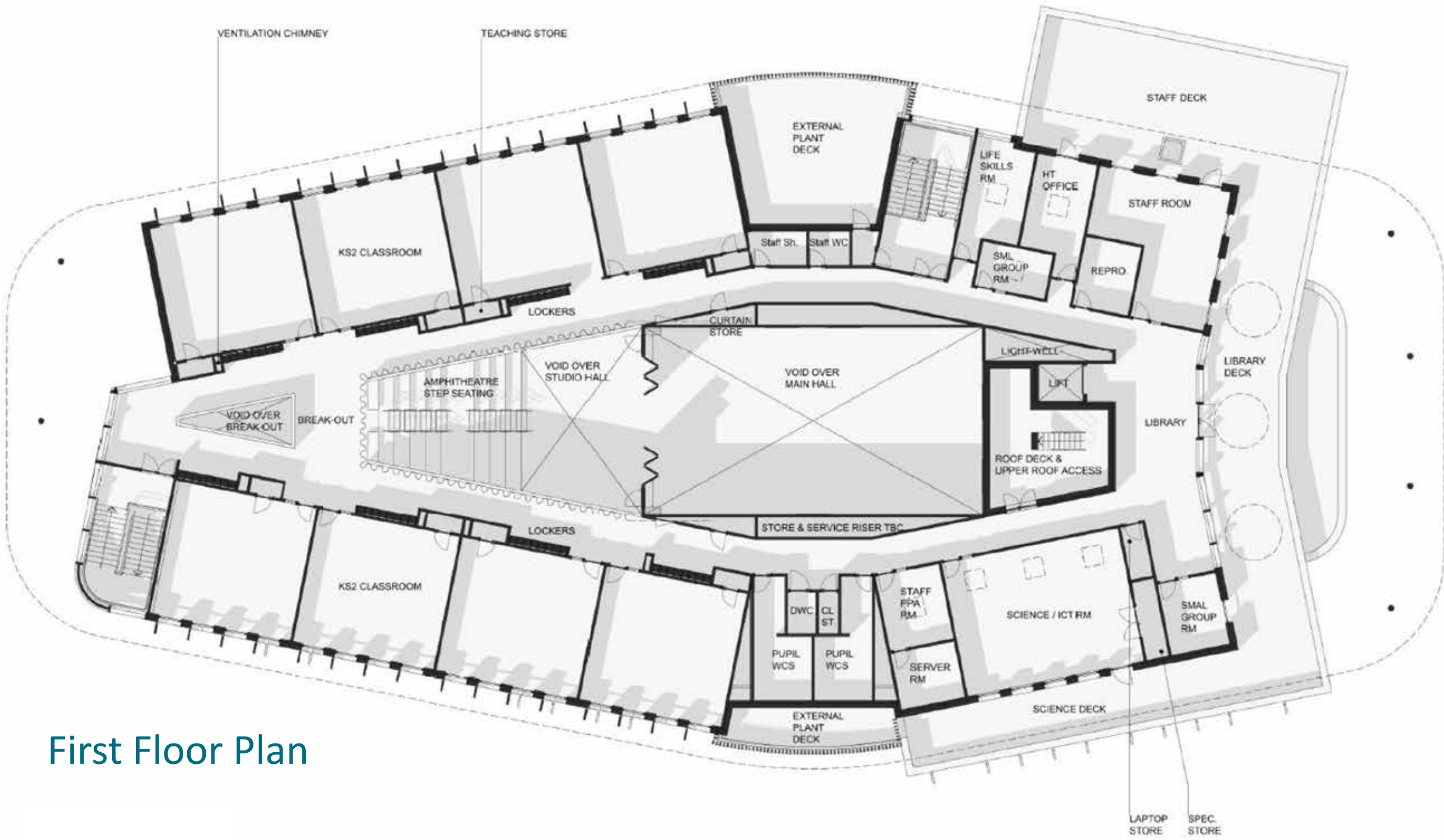


Ground Floor

- Main Entrance
- Main Hall and Studio Hall
- Special Support Centre
- Nursery
- Reception Classrooms
- KS1 Classrooms
- Kitchen

First Floor

- KS2 Classrooms
- Library
- External Deck Areas
- Science/ICT Room
- Staff Room



First Floor Plan



Indicative Proposed Materials

